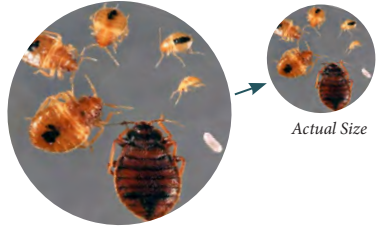


## Bed Bug Card



### Identification

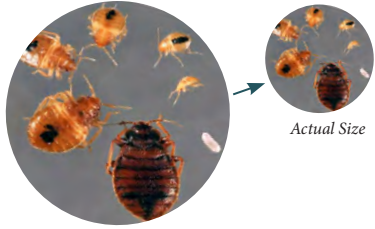
- Oval bodied, flattened, wingless, six legs
- Color: adults - brown to red  
nymphs - nearly colorless
- Eggs: white, glued to rough surfaces

### Signs

- Small black droppings, blood stains or shed skins on bottom bed sheet.
- Red, itchy rashes from bites.

[epa.gov/bedbugs](http://epa.gov/bedbugs)

## Bed Bug Card



### Identification

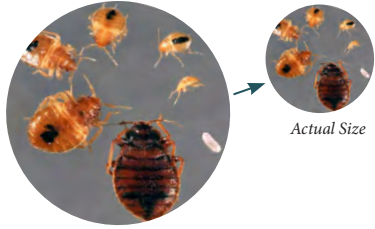
- Oval bodied, flattened, wingless, six legs
- Color: adults - brown to red  
nymphs - nearly colorless
- Eggs: white, glued to rough surfaces

### Signs

- Small black droppings, blood stains or shed skins on bottom bed sheet.
- Red, itchy rashes from bites.

[epa.gov/bedbugs](http://epa.gov/bedbugs)

## Bed Bug Card



### Identification

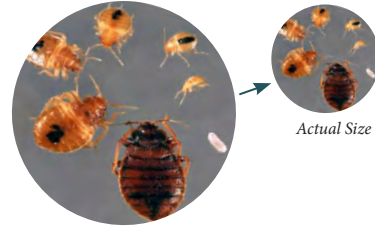
- Oval bodied, flattened, wingless, six legs
- Color: adults - brown to red  
nymphs - nearly colorless
- Eggs: white, glued to rough surfaces

### Signs

- Small black droppings, blood stains or shed skins on bottom bed sheet.
- Red, itchy rashes from bites.

[epa.gov/bedbugs](http://epa.gov/bedbugs)

## Bed Bug Card



### Identification

- Oval bodied, flattened, wingless, six legs
- Color: adults - brown to red  
nymphs - nearly colorless
- Eggs: white, glued to rough surfaces

### Signs

- Small black droppings, blood stains or shed skins on bottom bed sheet.
- Red, itchy rashes from bites.

[epa.gov/bedbugs](http://epa.gov/bedbugs)

## Bed Bug Card



### Identification

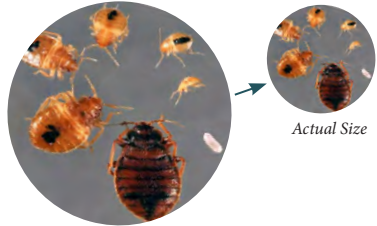
- Oval bodied, flattened, wingless, six legs
- Color: adults - brown to red  
nymphs - nearly colorless
- Eggs: white, glued to rough surfaces

### Signs

- Small black droppings, blood stains or shed skins on bottom bed sheet.
- Red, itchy rashes from bites.

[epa.gov/bedbugs](http://epa.gov/bedbugs)

## Bed Bug Card



### Identification

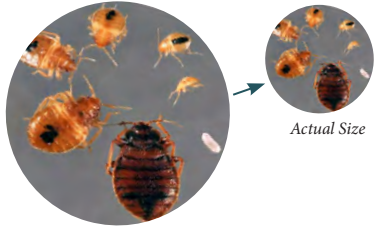
- Oval bodied, flattened, wingless, six legs
- Color: adults - brown to red  
nymphs - nearly colorless
- Eggs: white, glued to rough surfaces

### Signs

- Small black droppings, blood stains or shed skins on bottom bed sheet.
- Red, itchy rashes from bites.

[epa.gov/bedbugs](http://epa.gov/bedbugs)

## Bed Bug Card



### Identification

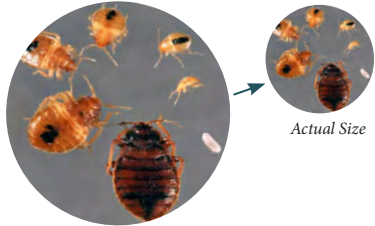
- Oval bodied, flattened, wingless, six legs
- Color: adults - brown to red  
nymphs - nearly colorless
- Eggs: white, glued to rough surfaces

### Signs

- Small black droppings, blood stains or shed skins on bottom bed sheet.
- Red, itchy rashes from bites.

[epa.gov/bedbugs](http://epa.gov/bedbugs)

## Bed Bug Card



### Identification

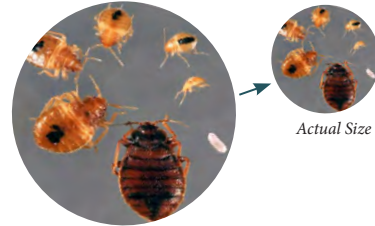
- Oval bodied, flattened, wingless, six legs
- Color: adults - brown to red  
nymphs - nearly colorless
- Eggs: white, glued to rough surfaces

### Signs

- Small black droppings, blood stains or shed skins on bottom bed sheet.
- Red, itchy rashes from bites.

[epa.gov/bedbugs](http://epa.gov/bedbugs)

## Bed Bug Card



### Identification

- Oval bodied, flattened, wingless, six legs
- Color: adults - brown to red  
nymphs - nearly colorless
- Eggs: white, glued to rough surfaces

### Signs

- Small black droppings, blood stains or shed skins on bottom bed sheet.
- Red, itchy rashes from bites.

[epa.gov/bedbugs](http://epa.gov/bedbugs)

## Bed Bug Card



### Identification

- Oval bodied, flattened, wingless, six legs
- Color: adults - brown to red  
nymphs - nearly colorless
- Eggs: white, glued to rough surfaces

### Signs

- Small black droppings, blood stains or shed skins on bottom bed sheet.
- Red, itchy rashes from bites.

[epa.gov/bedbugs](http://epa.gov/bedbugs)

