



Oneida County Health Department

CLINICAL SERVICES PUBLIC HEALTH UPDATE

Special points of interest:

- The measles epidemic continues to reach historic proportions in the United States.
- Influenza confirmed cases and hospitalizations are declining in the State.
- OCHD Maternal Child Health (MCH) Programs provide important services.
- Clinicians play an important role in stopping the rise of CRE infections

Inside this issue:

OCHD Breast-feeding Initiative **2**

CRE– Dangerous Superbug **3**

Oneida County Communicable Disease Stats **3**

OCHD Clinical programs **4**

Newsworthy Notes **4**

January 2015 surveillance

February 2015 Newsletter

WHY MEASLES? WHY NOW?

Last year in the United States there were approximately 650 cases of measles. This year, as of February 6, 2015, there have been 121 cases of measles in 17 states. At that rate, we are going to have twice the number of cases of measles as we had last year and last year was the biggest measles epidemic we have had in 20 years according to Dr. Paul Offit from *The Children’s Hospital of Philadelphia* www.medscape.com 2/23/2015.

“Why is this happening? It is happening because parents are choosing not to vaccinate their children. That is not new. Parents have made that choice. What is new is that we have reached the tipping point.”

New York State (NYS), outside of New York City (NYC), reported **five confirmed measles cases in 2014 and one in January of 2015. In 2014, NYC reported 27 confirmed measles cases; two have been reported in 2015.**

Hundreds of suspect illnesses are investigated annually and ruled out by local health departments.

As of February 21, 2015, there have been **no lab confirmed cases of measles in Oneida County.**

The large number of recent cases nationwide emphasizes the need for health-care providers to have a heightened awareness of the potential for measles in their communities, and the importance of providing vaccination at the earliest recommended age to prevent measles

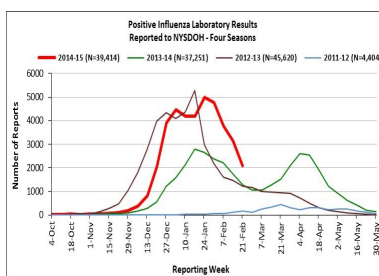


1. Measles can be serious
2. Measles is very contagious
3. Your child can still get measles in the United States
4. You have the power to protect your child with a safe and effective vaccine

WHAT’S HAPPENING WITH FLU?

Oneida County

As of February 21, 2015 there were **1009 confirmed cases of influenza in Oneida County.** From October 1, 2014 through February 21, 2015 **825 cases of influenza A** and **15 cases of influenza B** were reported in Oneida County.



New York State

Influenza activity remains geographically widespread in New York State with lab confirmed Influenza reported in 56 counties plus NYC. H3N2 remains the predominant strain but influenza B is increasing.

There was a **24% decrease** in patients hospitalized with lab confirmed influenza last week. There was one influenza related pediatric death reported last week bring the total to five pediatric deaths reported this season.

OCHD SEEKS TO INCREASE BREASTFEEDING RATES

"infant feeding should not be considered as a lifestyle choice but rather as a basic health issue"

Pediatrics, March 1, 2012

Healthy People 2020 Goals are to increase the percentage of babies:

- ever breastfed to 81.9 %
 - breastfeeding at 6 months to 60.6%
- 70% of babies in Oneida County in 2014 were ever breastfed

50% Breast Milk only

20% Breast Milk & Formula

% WIC infants breastfed for 6 months or longer

- 15.1 % of WIC infants in Oneida County in 2011
- 39.7% of WIC infants in NYS from 2008 –2010

What is OCHD doing to increase breastfeeding in Oneida County?

- 3 MCH staff trained as Certified Lactation Counselors (CLC)
- In 2014 the CLCs met with almost 300 women at 2 Obstetrical Care Centers to discuss feeding choices
- Established the *Baby Weigh Station* where women can meet with a CLC to have their questions about breastfeeding answered and to check their baby's weight
- CLCs host Breastfeeding Cafés where breastfeeding mothers can receive support for breastfeeding
- Providing Public Health Detailing to Obstetrical, Pediatric and Family Practice offices to increase awareness of community resources and provide educational information



Call for more information!

Oneida County Health Department
Breastfeeding Initiative

798-5906

Why should breastfeeding be a priority?

If 90% of babies in the United States were breastfed exclusively for 6 months:

- ◆ more than **900 infant deaths** could be prevented each year
- ◆ more than **\$13 Billion dollars** a year could be saved

When babies are breastfed these conditions show a reduction of:

- ◆ 15 –30% in obesity in adults and adolescents
- ◆ 64% in gastrointestinal infections
- ◆ 58% to 77% in the incidence of necrotizing enterocolitis
- ◆ 36% to 45% in the risk of sudden infant death syndrome
- ◆ 27% to 42% in the incidence of asthma, atopic dermatitis, and eczema

*AAP Policy Statement: Breastfeeding and the Use of Human Milk
 PEDIATRICS Vol. 129 No. 3 March 1, 2012*

New York State offers Breastfeeding Friendly Practice designation

Follow the 10 Steps!

- 1) Develop and maintain a written breastfeeding friendly office policy
- 2) Train all staff to promote, support and protect breastfeeding and breastfeeding moms
- 3) Eliminate infant formula and formula company materials from your office
- 4) Create a breastfeeding friendly office environment
- 5) During the **prenatal period**, discuss breastfeeding benefits, especially exclusive breastfeeding, and the basics of breastfeeding management with women and their families
- 6) During the **postpartum period**, discuss breastfeeding benefits, especially exclusive breastfeeding, and the basics of breastfeeding management with women and their families
- 7) Encourage breastfeeding mothers to feed newborns breast milk **only**
- 8) Teach mothers about maintaining lactation when separated from their infants
- 9) Identify the local breastfeeding support network and foster collaborative working relationships and referral systems
- 10) Provide comprehensive breastfeeding assistance and advice for mothers

For more information on establishing a Breastfeeding Friendly Practice contact the Maternal Child Health program at the OCHD - 798-5906 or visit the NYS DOH website:

http://www.health.ny.gov/prevention/nutrition/wic/breastfeeding/for_hcp.htm

SUPERBUG INFECTIONS

What are CRE?

CRE stands for “carbapenem-resistant enterobacteriaceae.” Enterobacteriaceae are a family of bacteria that are often found in people’s gastrointestinal tract that can cause infections both in community and healthcare settings. Some enterobacteriaceae have become resistant to all or almost all antibiotics. In general, CRE test non-susceptible to at least one of the carbapenem antibiotics

and/or produce an enzyme (carbapenemase) that can make them resistant to these antibiotics.

Clinicians play a critical role in slowing the spread of CRE. Rapidly identifying patients colonized or infected with these organisms and placing them in Contact Precautions when appropriate, using antibiotics wisely, and minimizing device use are all important parts of preventing CRE transmis-

sion.

2012 CRE Toolkit:

<http://www.cdc.gov/hai/organisms/cre/cre-toolkit/index.html>

CRE in Healthcare Settings:

<http://www.cdc.gov/HAI/organisms/cre/>



Rapid action by clinicians and healthcare leaders is needed to stop the rise of lethal CRE infections.

ONEIDA COUNTY COMMUNICABLE DISEASE SURVEILLANCE - Diseases of Interest

DISEASE	JANUARY 2015	YTD 2015 (as of 2/28/15)	YTD 2014 (as of 2/28/14)	DISEASE	JANUARY 2015	YTD 2015 (as of 2/28/15)	YTD 2014 (as of 2/28/14)
Tuberculosis	0	0	0	Influenza A	482	*942	*672
Giardia	2	3	12	Influenza B	5	15	6
Rabies Exposure	3	3	4	Lyme	0	0	0
Salmonella	0	3	1	Pertussis	5	5	3
Chlamydia	26	77	40	Cryptosporidiosis	0	0	1
Campylobacter	1	1	1	Syphilis	0	0	0
Hepatitis C (chronic)	2	13	15	Gonorrhea	2	15	4
Hepatitis C (acute)	0	0	0				

* Influenza data reflect confirmed cases from October 1, 2014 to February 21, 2015.

YTD- Year to Date



ANTHONY J. PICENTE, JR.
ONEIDA COUNTY EXECUTIVE

Phone: 315-798-5747
Fax: 315-798-1057
E-mail:
spejic@ocgov.net
lkokoszki@ocgov.net

**We're on the
Web!**

Hours:
8:30am-
4:00pm,
Monday
through
Friday

 Find us on
Facebook

Prevent, Promote, Protect

CLINICAL SERVICES

406 Elizabeth Street
Utica, New York 13501

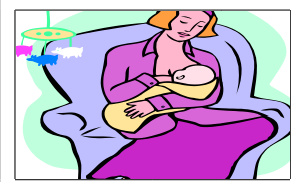


Public Health
Prevent. Promote. Protect.

STD



MOMS/Maternal Child



All previous newsletters are posted at <http://www.ocgov.net> Go to Health Department then click on For

Etc. etc.

Get weekly updates on
vaccine information while
it's still new!
www.immunize.org/subscribe

ASK AN EXPERT

Call for a clinical inquiry
regarding your patient
with an **STD, HIV, HCV**
or those in need of PEP or
PrEP

1-866-637-2342
www.ceitraining.org

Decline in the number of new
Ebola cases in West Africa.
For more information, click:

<http://apps.who.int/ebola/en/ebola-situation-report/situation-reports/ebola-situation-report-18-february-2015>



CLINICAL INQUIRY FOR: HIV • HCV • STD • PEP • PrEP



CEI LINE

1-866-637-2342

ASK AN EXPERT
Call for a clinical inquiry
regarding your patient
with an STD, HIV, HCV,
or those in need of
PEP or PrEP

866-637-2342

www.ceitraining.org