



W. Chestnut Street LTPAP Public Meeting #1  
St. Paul's Roman Catholic Church – 1807 Bedford Street  
March 8, 2003 @6:00 PM – 7:30 PM

**Attendees:**

Dana Crisino, MBA, AICP, Oneida County Deputy  
Commissioner of Planning, /Director - HOCTC

Julie Richmond, MPA, Transportation Program  
Manager – HOCTC

Adam Palmer, MPA, Senior Planner - HOCTC

Alexander Turner, Planner - HOCTC

Kassandra Burkhart, Planning Specialist - HOCTC

Katherine Ember, AICP - Planning4Places, LLC

James Levy, AICP – Planning4Places, LLC

Steve Wong, AICP, PP, PTP, RSP 1, PMP – Sam  
Schwartz

Doug Gerber, RLA – Weston & Sampson

Peter Loyola, RLA – CLA Site

*Additional Attendees – see sign-in sheet*

---

The meeting was held in an open house format with stations on land use/active transportation/ green infrastructure, neighborhood visioning, placemaking, and traffic and safety. Anthony J. Picente Jr., County Executive provided a welcome explaining the intent of the meeting. Mayor Jacqueline M. Izzo also welcomed meeting attendees. Dana Crisino elaborated on the planning process and the project schedule.

A resident of W. Chestnut Street noted that this area was studied previously and expressed concern that previously master plan study discussions for the rerouting truck traffic to Potter Road appeared left unimplemented and then noted that truck turning movements onto Potter Road turn would be challenging under the current configuration. Commercial traffic, along with pedestrian safety, are two of the biggest issues. The resident also recommended that traffic be slowed with a light at N. George Street.

### What We Heard

- Land Use – some residents noted an interest in additional park options such as a splash pad, dog park, and pocket parks. A Farmer's Market opportunity was also suggested.
- Placemaking – there was interest in connecting to the surrounding City neighborhoods (including the Historic District). Pocket parks/gathering areas were also discussed as noted above. There is a gateway potential at N. George Street & W. Chestnut. A suggestion was made to utilize both churches' open space for combined community events.

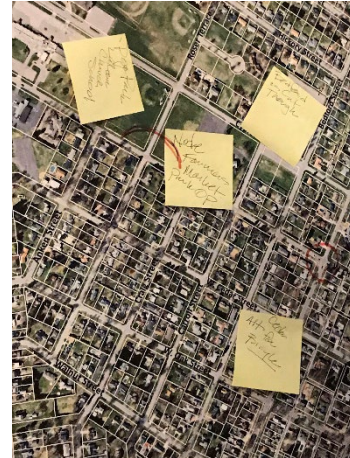


- Active Transportation – sidewalks are a priority for the W. Chestnut Street and Merrick Road areas. Safe bicycle infrastructure needs were also mentioned but to a lesser degree with an interest in multi-use paths (sidepath). N. George Street is major ped/bike corridor north/south. A second major ped/bike corridor north/south is Roser Terrace.
- Transit – accessible bus stops were discussed. If facilities were improved and routes easier to navigate, more people may choose to use transit.
- Traffic and Safety –
  - The intersection of W. Chestnut Street and N. Madison Street is dangerous – people run the red light often. Residents would like to see more police presence to address the behavior.
  - The W. Chestnut Street crossing at N. George Street was cited as an unsafe crossing. N. George Street is a popular street for people to walk on.
  - Crosswalks and pedestrian signals are needed at the intersection of W. Chestnut Street and N. James Street.
  - Residents reported crashes occur at the intersection of Bedford Street and W. Chestnut.
  - People asked about redirecting trucks to Potter Road. Most were in favor of this option, but one person was concerned about how the residents that live off Potter might feel.
  - Several people voiced support for sidewalks along W. Chestnut Street/Merrick Road. One resident stated she will not walk on W. Chestnut Street, instead, uses parallel routes through the neighborhoods.
  - Bike lanes, streetlighting and refreshed pavement markings were also recommended, along the length of the corridor
  - Several people thought a roundabout at Turin Road and W. Chestnut Street/Merrick Road would be a good idea. A couple of people were not in favor of a roundabout at that location.
  - Look at intersections of N. George St./W. Chestnut, N. James St./W. Chestnut St, N. Madison St./W. Chestnut St., Bedford St./W. Chestnut St. for safety improvements. Safer crosswalks at Black River Blvd were also discussed.
- Vision – overall the public expressed enthusiasm for sidewalks and safer crossings in the W. Chestnut Street Study Area with an interest in connections to the Hospital and greater connections to surrounding neighborhoods and the rest of the City.

## Raw Notes from Aerial Boards by Topic

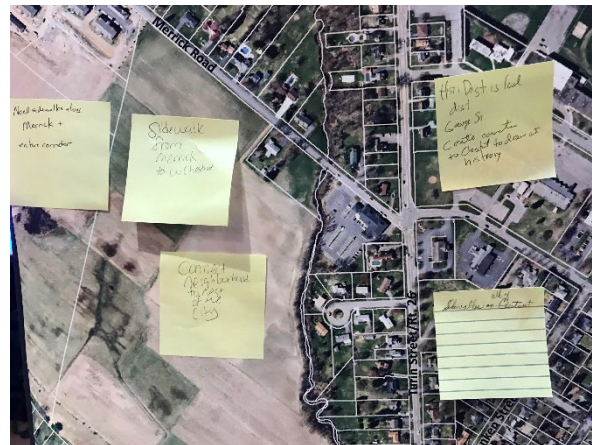
### Visioning Board

- Pedestrian Corridor – Roser Terrace
- Bedford is a cut through
- Dog Park Lutheran Church School
- Node – Farmers Market/Park Opportunity (W. Chestnut & Roser Terrace circled on map)
- Bridge over Wood Creek
- School buses stop at each house (Merrick Road circled on map)
- Bike routes to base
- Cedar Street is an alternative for bicycles
- N. James Street/N. George Street pedestrian corridor
- Rome’s North Broadway in Saratoga (N. George Street)



### Land Use/Active Transportation/Green Infrastructure/Natural Resources

- Need sidewalks along Merrick & entire corridor
- Sidewalk from Merrick to W. Chestnut
- Connect neighborhood to rest of the City
- Historic District along N. George Street – create connection to W. Chestnut to draw at history
- Sidewalks on all of W. Chestnut
- Sidewalks on Jarvis Avenue
- Use Cedar to access trail not W. Chestnut
- Splash pad and trail connection
- Sidewalks on Madison & crosswalks on W. Chestnut
- No trucks on W. Chestnut
- Accidents at N. Madison
- Don’t widen road
- Too much traffic
- Dunkin Donuts – congestion, suggestion for 4-lanes or turn lanes
- Sidewalk to Hospital
- Sidewalk and bike lane near dog park
- Concern about use of roundabout at Turin/Merrick
- Sidewalks on side of Merrick
- Cornell Study

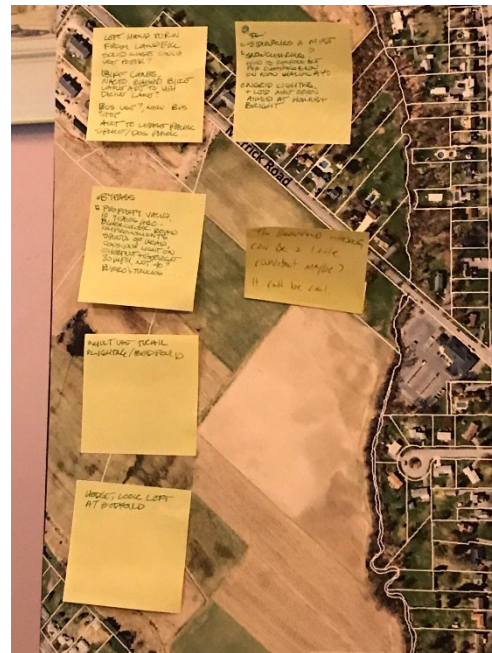


### Traffic and Safety

- Traffic light at N. Madison
- N. George Street unsafe crossing
- N. James Street – people walk in the street
- No police presence
- Crashes – Bedford Street
- Trucks – Potter Road
- Sidewalk
- Will not walk on W. Chestnut
- Bike lanes
- Paint
- Roundabout

### Placemaking

- Left hand turn from landfill solid waste could use Potter?
- Bike lanes, NACTO, raised bike lane adjacent to vehicle drive lane?
- Bus use? New bus stop
- Adjacent to lease park space/dog park
- Sidewalks a must
- Snow clearing? Who is responsible for clearing snow on new walkways
- National Grid lighting & LED are often aimed at homes & bright
- Bypass
- Property value, 10 years ago – Black River road improvements.
- Speed of road, consider light on W. Chestnut & N. George 30 MPH, not 40?
- Burro's trucks
- The Hannaford intersection can be a little roundabout maybe? It could be cool.
- Multi-use trail
- Light/Bedford
- Street lights
- Remove vegetation in ROW, blocks traffic view
- Safer ped crossings
- Hedge look left at Bedford





## Study Area Map

- Create path to Rome Cemetery from Merrick Rd area. There is no good way to walk to the Cemetery.
- Like idea of sidepath to Merrick and to trail. Connect Jervis Avenue eventually.
- Turin/Merrick area – potential for a roundabout. Off-set is confusing.
- Narrow vehicle lanes – less of a speedway.
- Pull offs for bus stops and lane markings on entire road
- Finish sidewalks on N. George
- N. George St./W. Chestnut – potential for roundabout
- Stacking past James St. to Black River Blvd.
- Bus stops need to be accessible.
- Bike lanes and adequate sidewalks
- No one stopping or crosswalks (Black River Blvd & Rose Lane)
- Crosswalks – peds hard to see at night (W. Chestnut St. & Black River Blvd.)
- Need a safer crossing at Black River Blvd. Don't forget trees – Black River is barren.
- Walks through neighborhood to shopping area (around W. Chestnut) as there are no sidewalks.
- Replace bridge over Wood Creek on Merrick Road.
- Sidewalks on W. Chestnut Street.
- Sidewalks on Merrick Road.
- At Turin & Merrick – roundabout or squared off intersection for better flow
- Loop trail to Potter

