

Proposed Griffiss Hanger Sports/Recreation Center & Field Complex

- Program Spaces:
- 1. Lobby & Circulation
 - 2. Administration
 - 3. Program Spaces
 - 4. Court/Gymnasium Spaces
 - 5. Suspended Walk/Jog Track
 - 6. Field Spaces
 - 7. Support Spaces
 - 8. Receiving/Service Dock

1. Lobby & Circulation:
- New Main Lobby = 6,860 SF
 - New Field Lobby = 650 SF
 - Level 1 footprint = 387,700 SF
 - Total Area = 412,300 SF
 - Circulation = 51,500 SF (85% efficiency); includes new lobbies

2. Administration:
- 5,200 SF x 3 = 15,600 SF

- Area Includes:
- Offices
 - Meeting rooms
 - Convenience restrooms
 - Storage
 - Kitchenette

3. Program Spaces:
- 55,300 SF

- Area Includes:
- Multipurpose rooms
 - Strength & Conditioning/Fitness Center
 - Group Fitness Class spaces
 - Classrooms
 - Game room(s)
 - Instructional kitchen space
 - Art studios
 - Childcare
 - Technology center & instructional space
 - Senior center/intergenerational lounge space
 - Spa/Holistic health amenities
 - Sports medicine & training rooms
 - Locker rooms & restrooms

4. Court/Gymnasium Spaces:
- 72,800 SF

- Area Includes:
- (6) basketball courts; 84' x 50'
 - (6) volleyball courts
 - (24) pickleball courts
 - Walk/jog track suspended above periphery

5. Suspended Walk/Jog Track:
- 14,200 SF

- Area Includes:
- 3-lane walk/jog track
 - 2-stop elevator
 - Communicating open stair
 - (2) exit stairs
 - Stretching area
 - Convenience restrooms

6. Field Spaces:
- (3) multipurpose field spaces
 - 56, 850 SF
 - 71,850 SF
 - 72,700 SF
 - Total = 201,400 SF

7. Support Spaces:
- (3) support spaces
 - 6,200 SF
 - 6,550 SF
 - 6,900 SF
 - Total = 19,650 SF

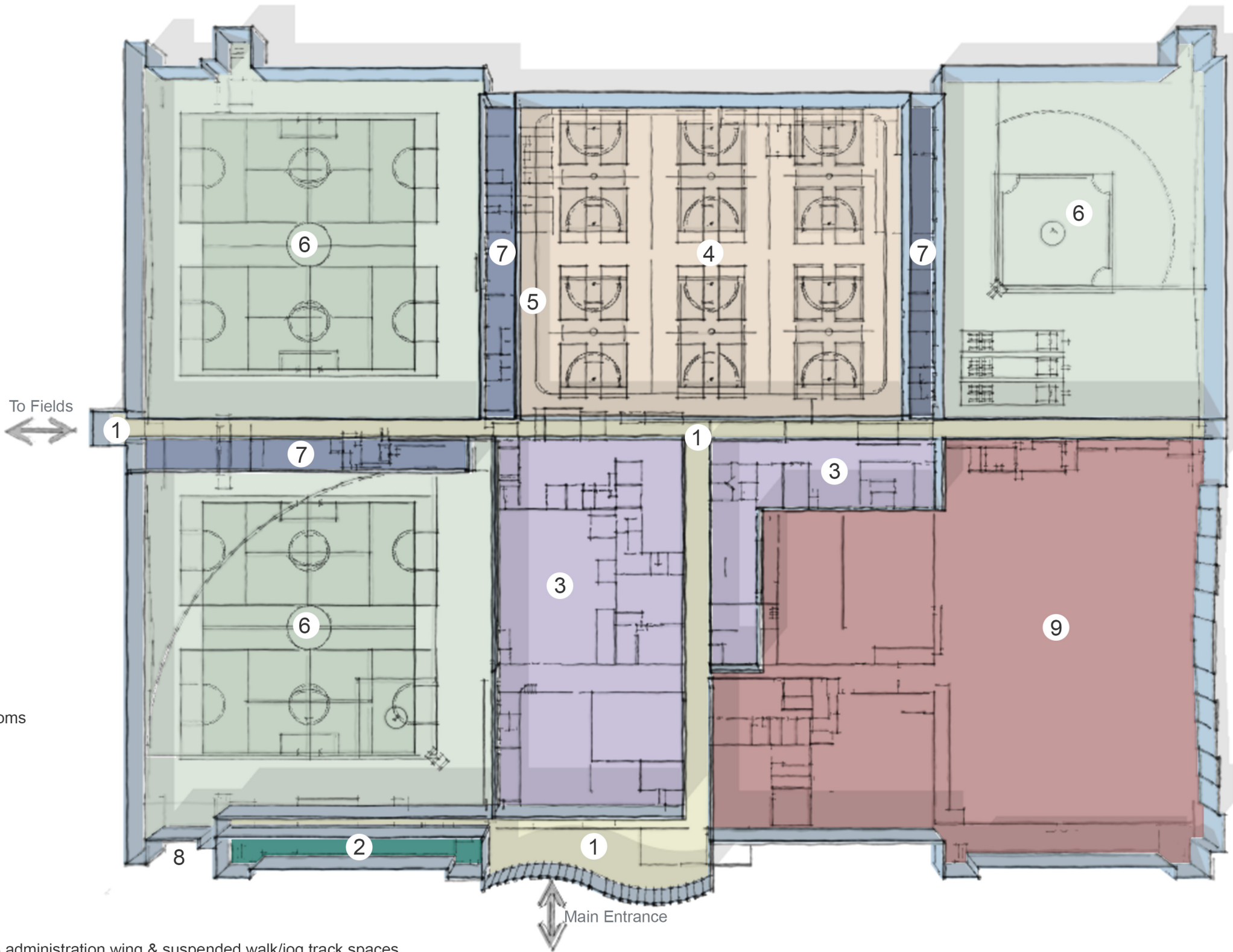
- Area Includes:
- Field & court storage
 - Remote restrooms
 - Team rooms
 - Mechanical, electrical, plumbing & IT rooms

8. Receiving/Service Dock:
- 1,500 SF

- Area Includes:
- Receiving area
 - Offices
 - Storage

9. US Air Force Space

- Building Summary:
- Level 1 footprint = 387,700 SF
 - Total Area = 412,300 SF; includes L2/L3 administration wing & suspended walk/jog track spaces
 - Based on other community recreation centers wet spaces are approximately 5% of the GSF: 5% of 412,300 SF = 20,615 SF (primarily located in #3 & #7 above)



Proposed Griffiss Hanger Sports/Recreation Center & Field Complex

Concept Plan